

# Archetypes in Mythology



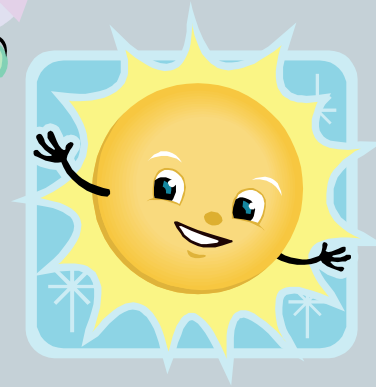
# What is an archetype?



an image, descriptive detail, plot pattern, or character type that occurs frequently in literature, myth, religion, or folklore and is, therefore, believed to provoke profound emotions because it touches the unconscious memory and thus calls into play illogical but strong responses

# Archetypal Mythological Characters

- Earth Mother
- Sky Father
- Solar Deity
- Lunar Deity
- Ruler of the Underworld
- Psychopomp
- First Man/Woman
- Life-Death-Rebirth Deity
- Trickster



# Other Archetypal Characters

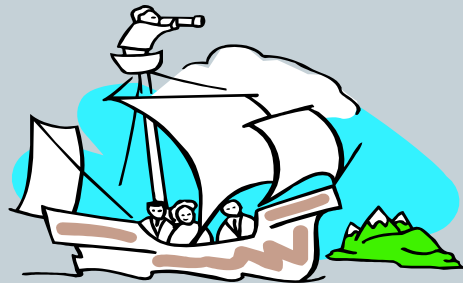


- hero
- outcast
- orphan
- scapegoat
- star-crossed lovers
- shrew

# Archetypal Mythological Events



- Great flood
- Creation of the world/universe
- End of the world/universe
- Heroic journey/quest
- Familial conflict



# Other Archetypal Situations



- task
- quest
- loss of innocence
- initiation
- coming-of-age
- cleansing
- rebirth