

Introduction to Mythology

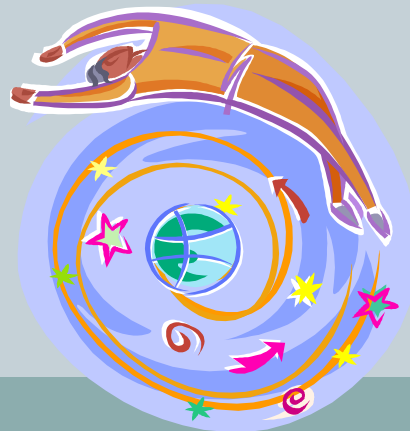


Purposes of Mythology



Myths generally explain...

- Natural phenomena
- The creation of the universe
- Human institutions
- The relationship between the gods and man
- Anything else for which there is no simple explanation



What is mythology?

Mythos = story

Logos = study of;
written record of

Definition: The body of sacred stories of a particular culture, or of humankind as a whole; the study and interpretation of such stories.

What *isn't* mythology?

- Legends
- Fairy tales
- Folk tales

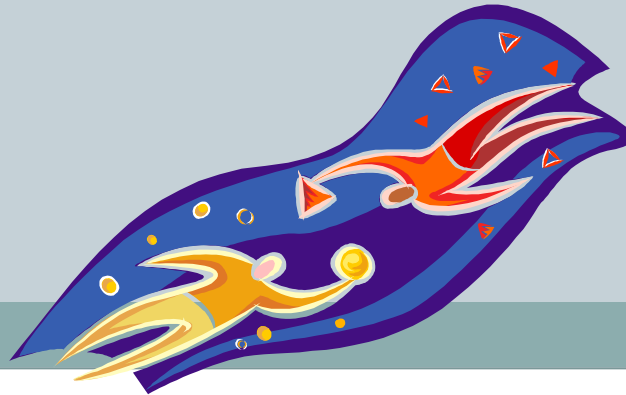


Why study mythology?



Mythology...

- Gives insight into an ancient culture
- Helps us understand human nature
- Reflects a view of the universe that acknowledges the mystery and beauty of humanity
- Expands vocabulary
- Helps us understand mythological references in our current culture



Did you know?

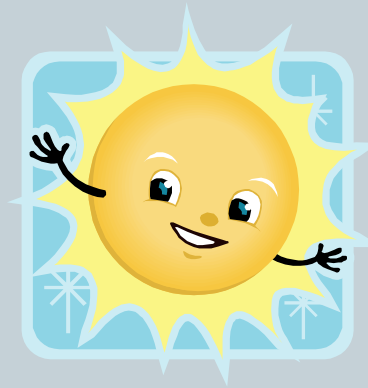


Each of the following got its name from mythology!



Archetypal Mythological Characters

- Earth Mother
- Sky Father
- Solar Deity
- Lunar Deity
- Ruler of the Underworld
- Psychopomp
- First Man/Woman
- Life-Death-Rebirth Deity
- Trickster



Archetypal Mythological Events



- Great flood
- Creation of the world/universe
- End of the world/universe
- Heroic journey/quest
- Familial conflict

